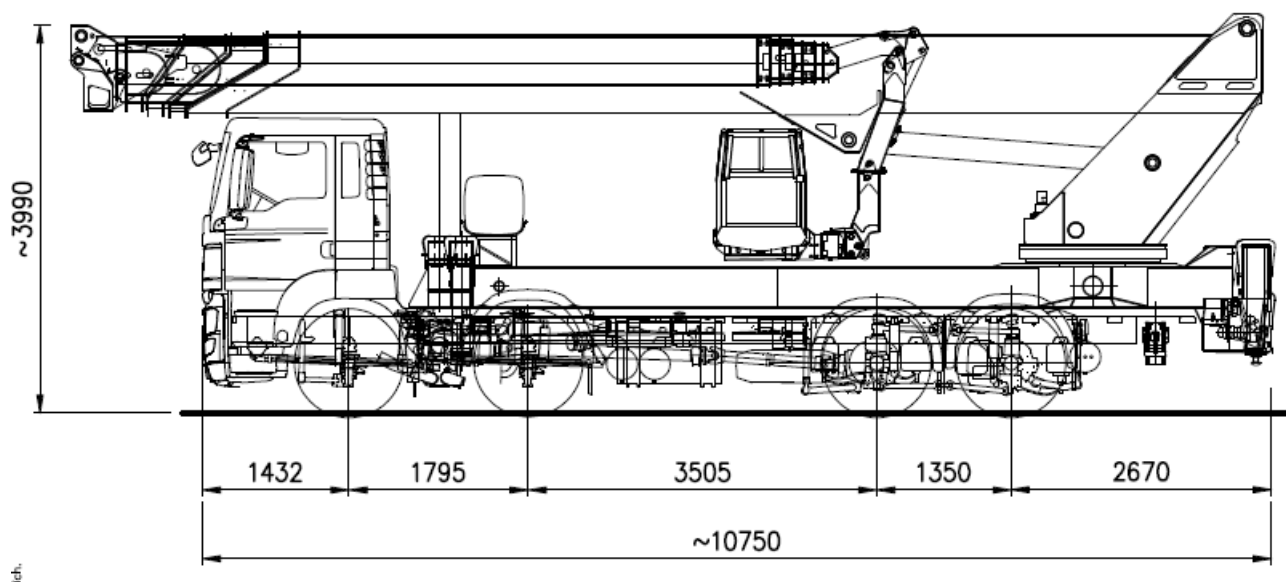
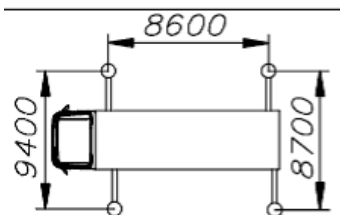
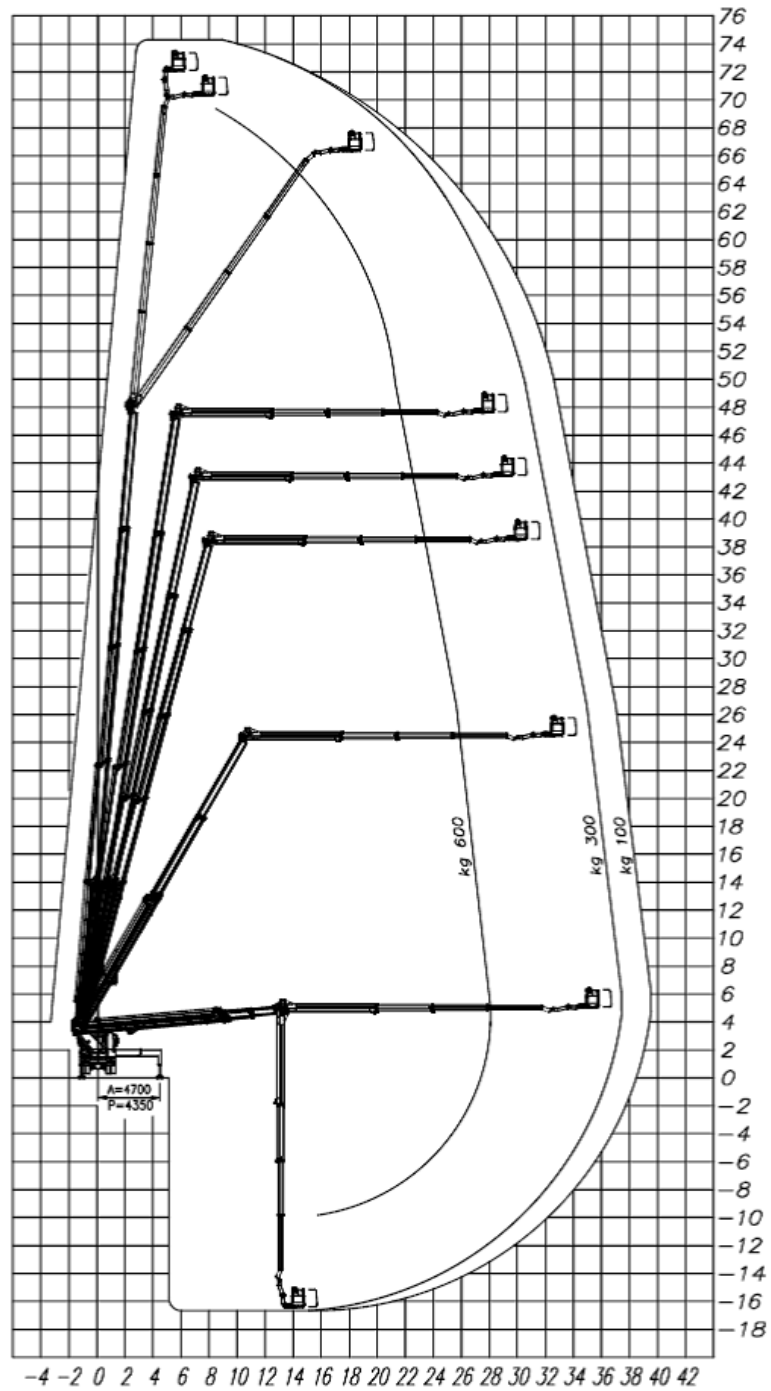
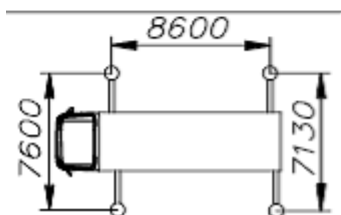
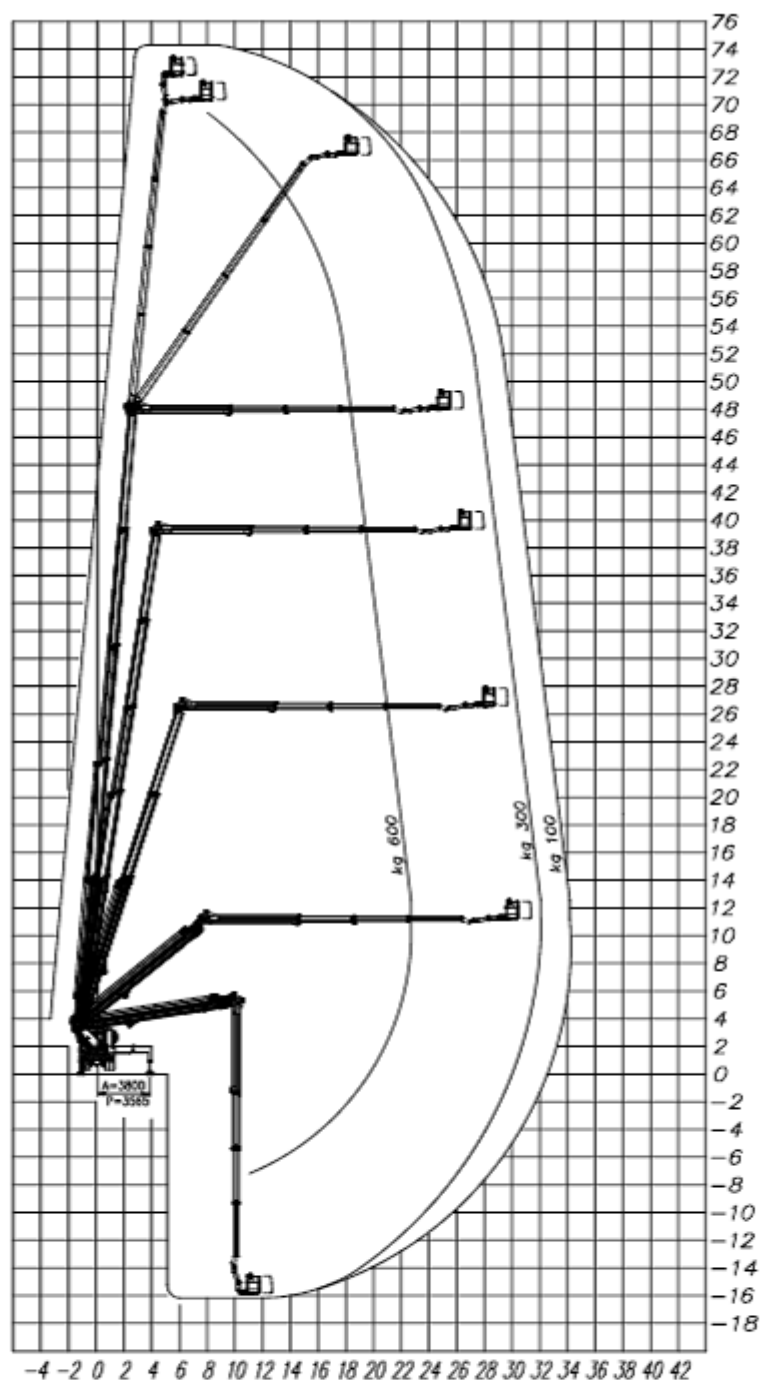


7. INSTALLAZIONE SU MAN E AREE DI LAVORO

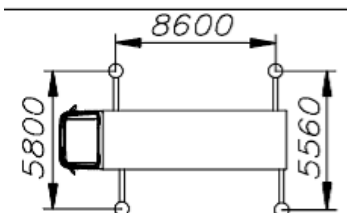
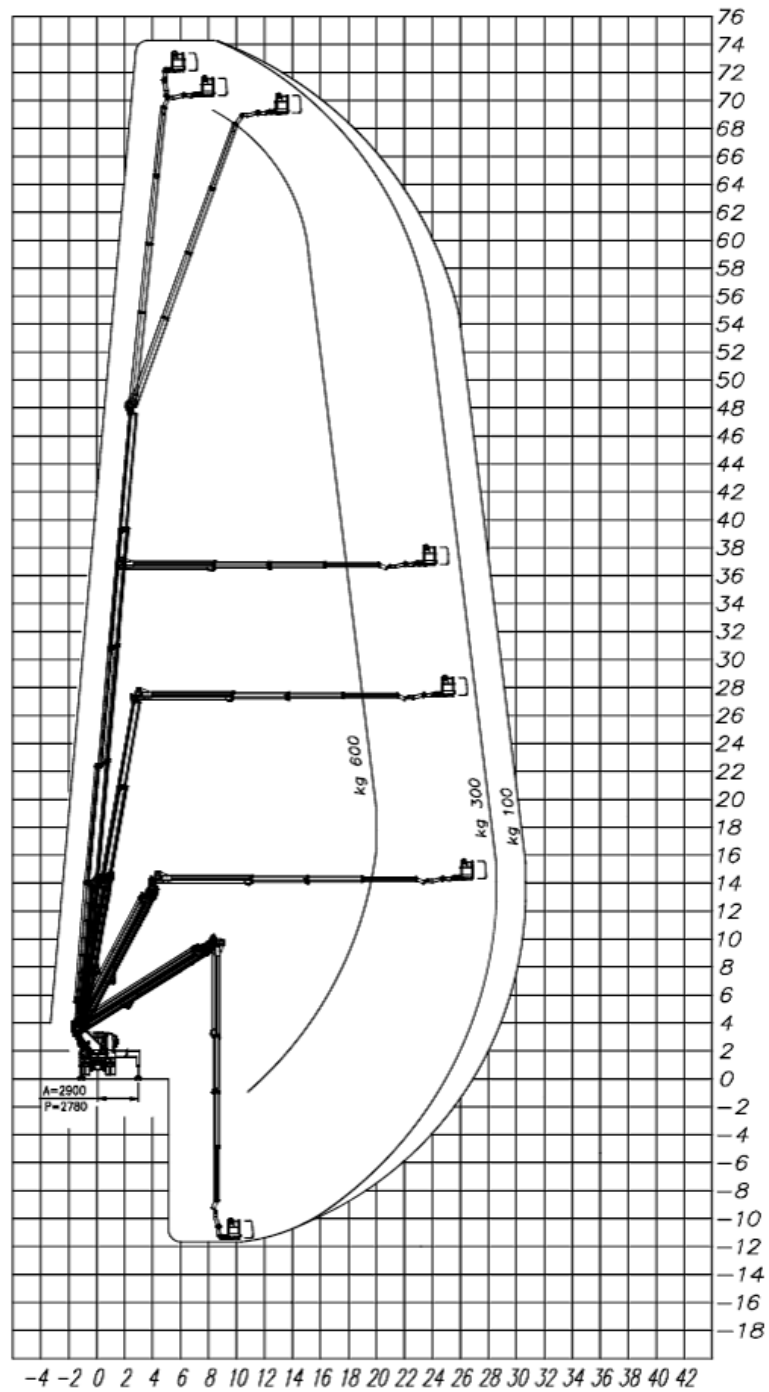




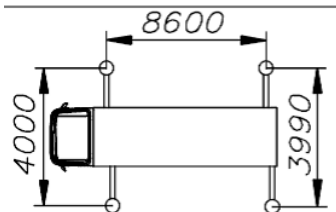
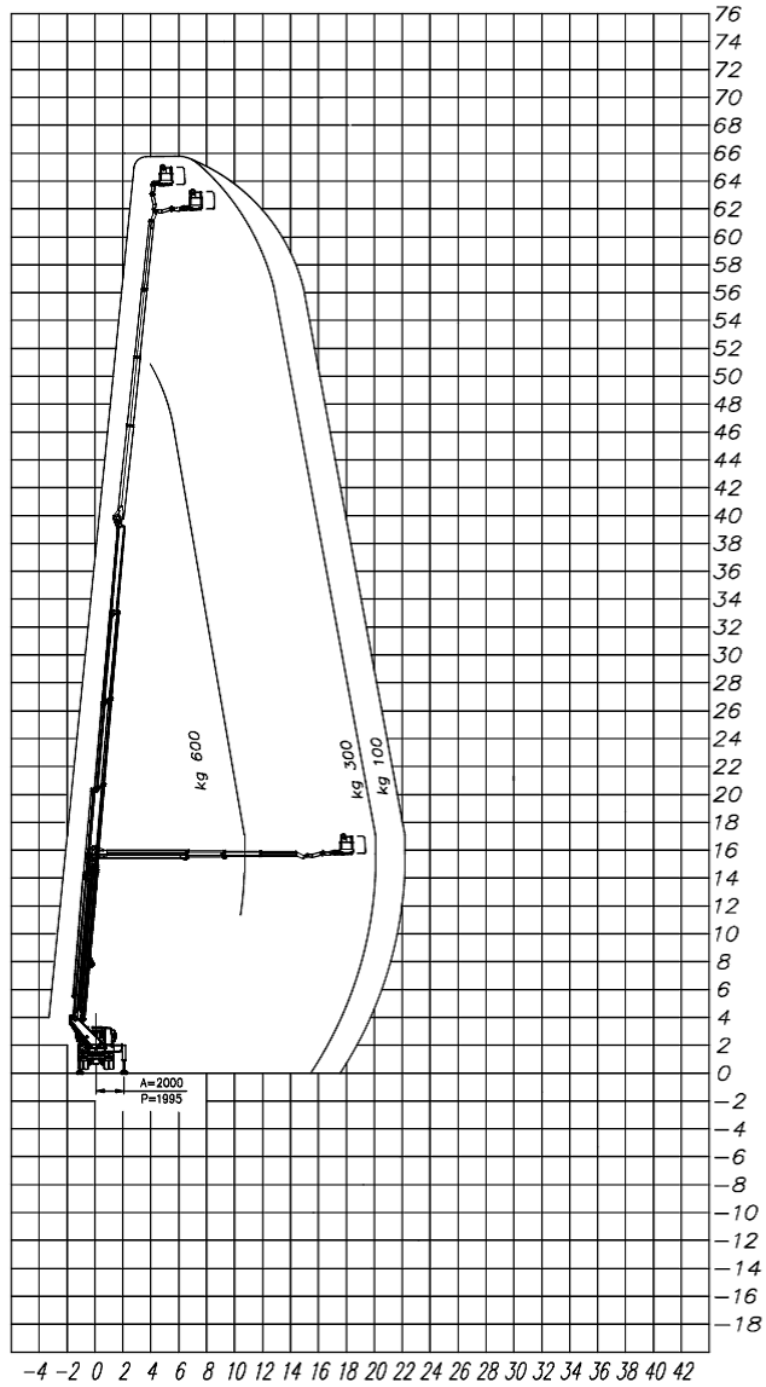
ForSte 75TJJ
Area massima



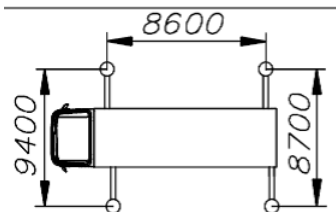
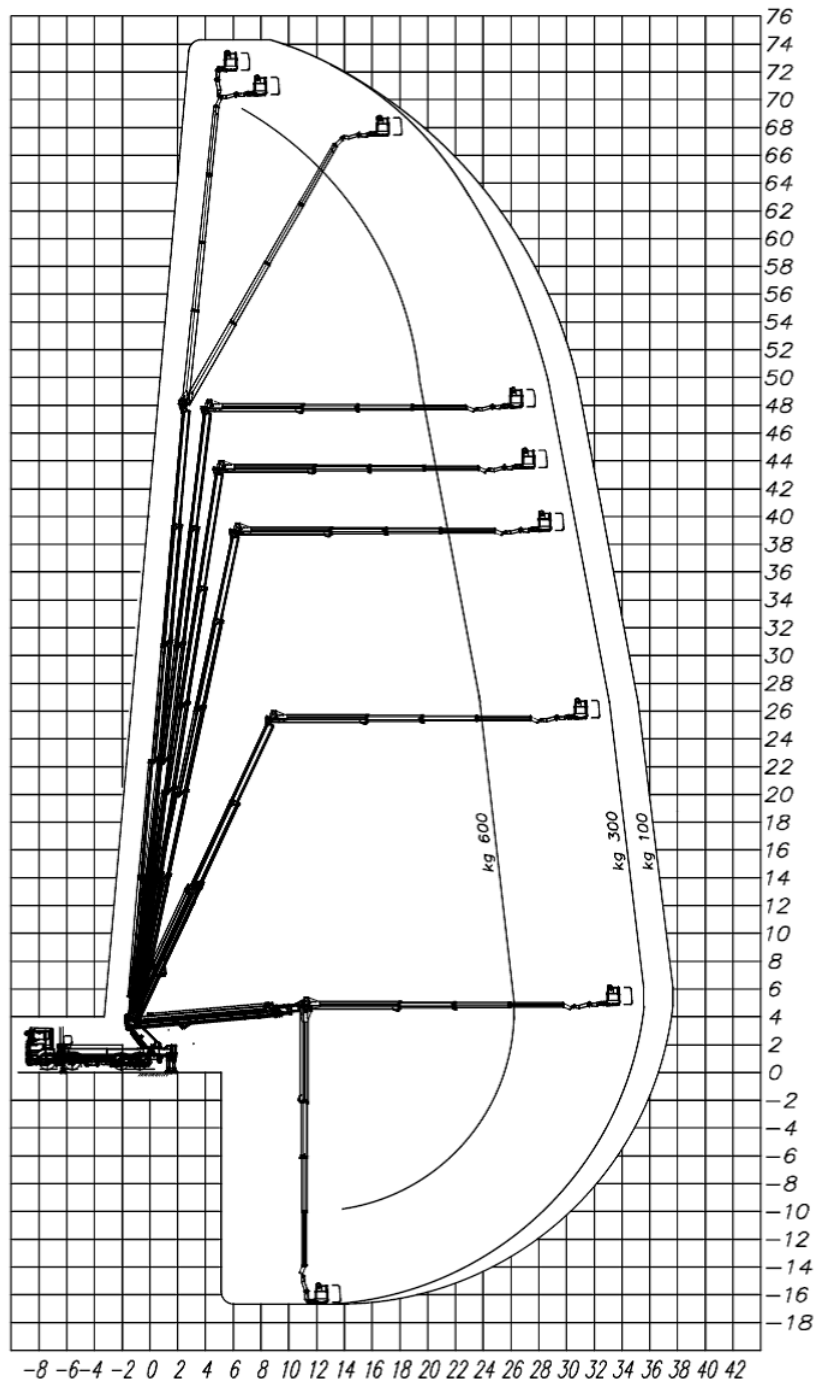
ForSte 75TJJ
Area parziale



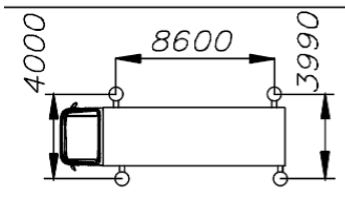
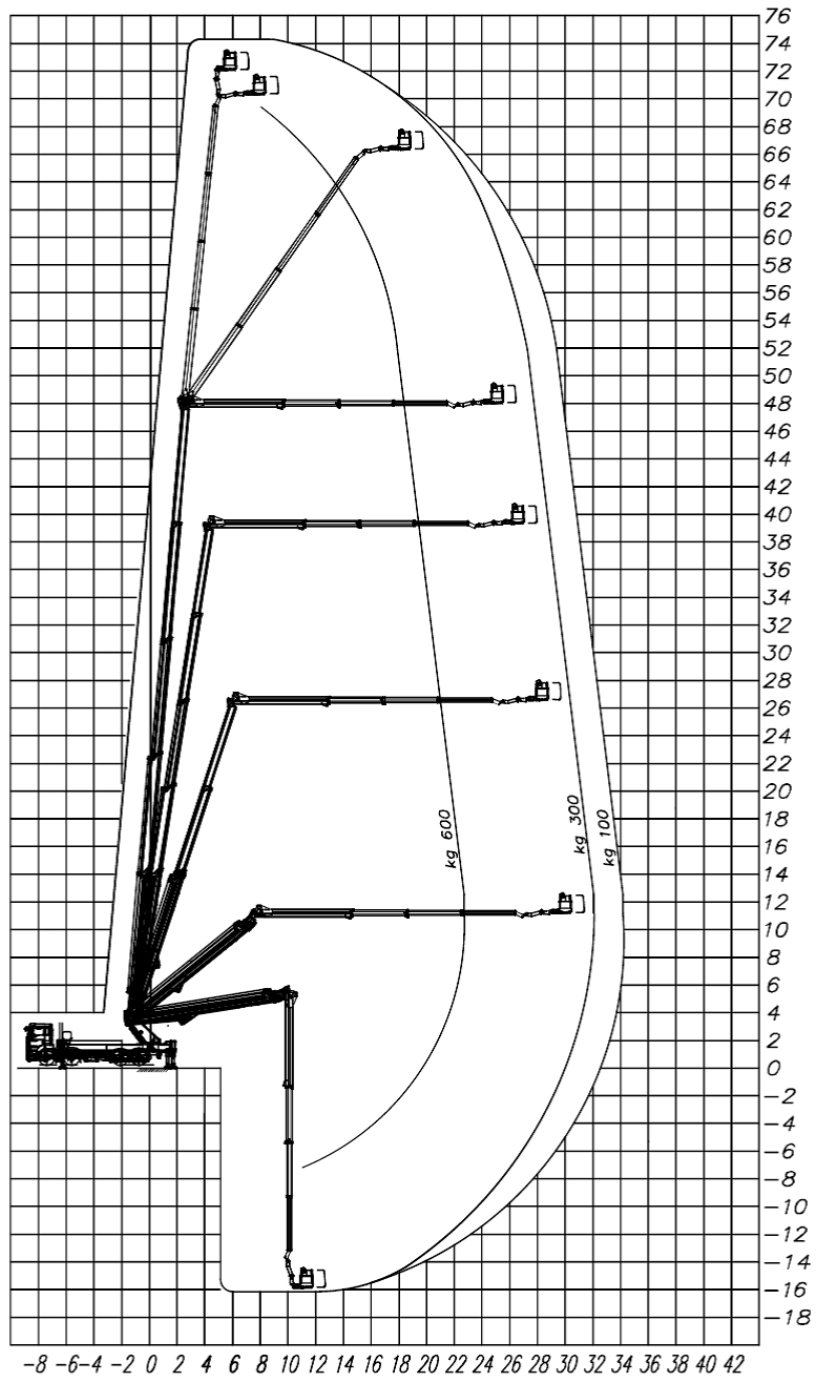
ForSte 75TJJ
Area parziale



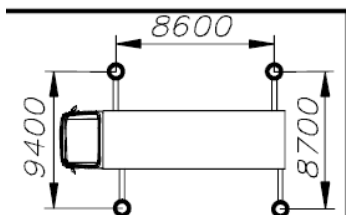
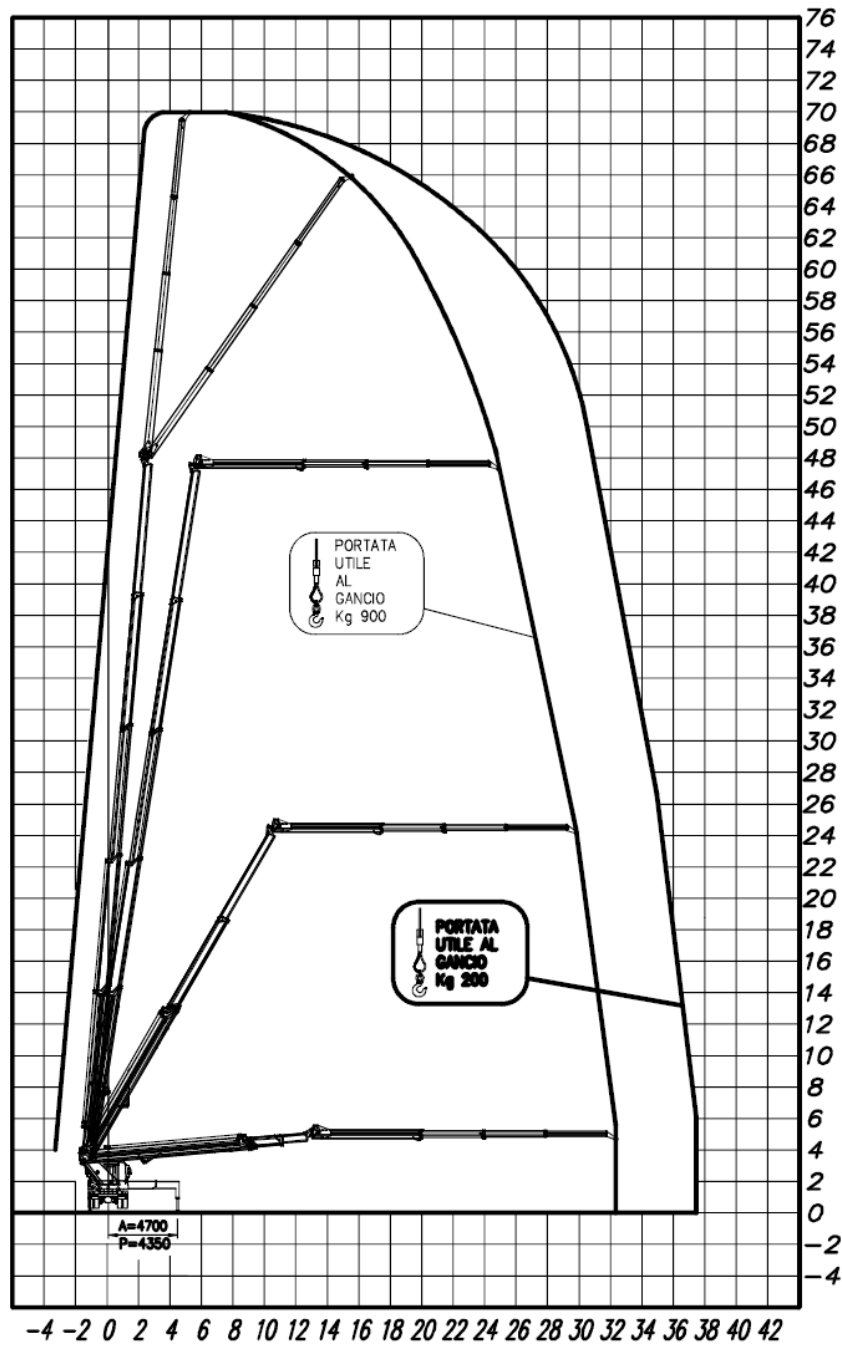
ForSte 75TJJ
Area minima



ForSte 75TJJ
 Area anteriore/posteriore



ForSte 75TJJ
Area posteriore minima



ForSte 75TJJ ARGANO